

SHERATON BRUSSELS HOTEL

PLACE ROGIER 3
B-1020 BRUSSELS, BELGIUM
T (32) (2) 224 3111
F (32) (2) 224 3456
E covention.00488@starwoodhotels.com
sheratonbrussels.com



Sheraton
Brussels
HOTEL



Sheraton Brussels Hotel

Meeting, dining, relaxing and sleeping above Brussels' skyline

Sheraton Brussels Hotel welcomes you in a warm and relaxed atmosphere. Rising high above Brussels' skyline the hotel is situated at an ideal downtown location next to Brussels' main shopping area (Rue Neuve), the Grand Place and all key EU institutions.

Crescendo

The charming, casual restaurant where the chef de cuisine, Christian Tirilly, welcomes you to take your breakfast of the buffet or to taste seasonal 100% Belgian cuisine at lunch.

Le Train

Burger world offering different types of bread, toppings and sauces to design your favourite burger.

RestOBar

Snacks and cool drinks after a busy day in a contemporary atmosphere.

OBar

Relax with lounge music with diverse cocktails, beers and others.

Espressamente by Illy

Italian coffee bar offering coffee specialties of the renowned Illy Coffee as well as several snacks.

Sheraton Brussels Guest Rooms

511 Spacious guest rooms and suites in warm colors offer elegant, modern furniture, and the famous Sheraton Sweet Sleeper Bed^(SM) to unwind. Especially for our Club Room guest we dispose of a private Club Lounge on the 25th floor.

Classic Rooms	369	Suites	22
Club Rooms	119	└ 1 room	17
Presidential Suite	1	└ 2 rooms	5

Big Moments are better when Shared

Largest meeting space in the city center of Brussels: 19 modular meeting rooms (2947sqm) to meet with up to 800 people for all kinds of business event, banquet, gala dinners or convention: The sumptuous Salle des Nations for large events or the spectacular Horizon room on the 30th floor with a panoramic view of the city.

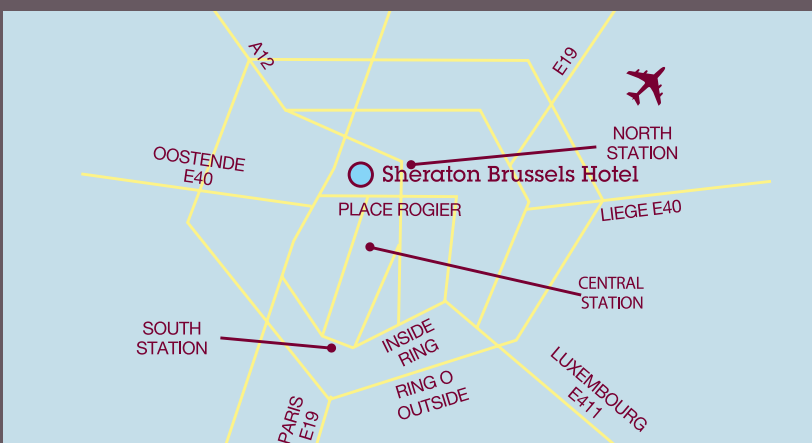
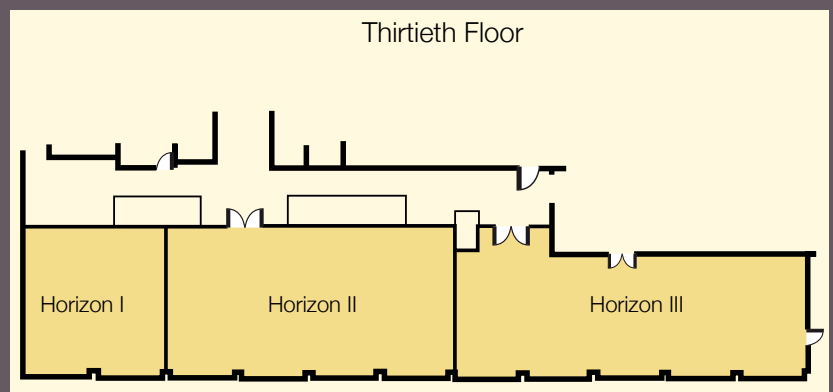
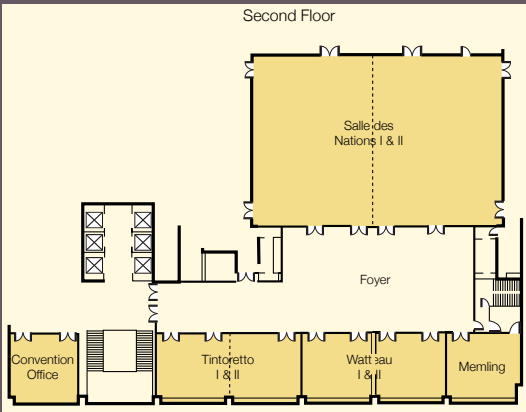
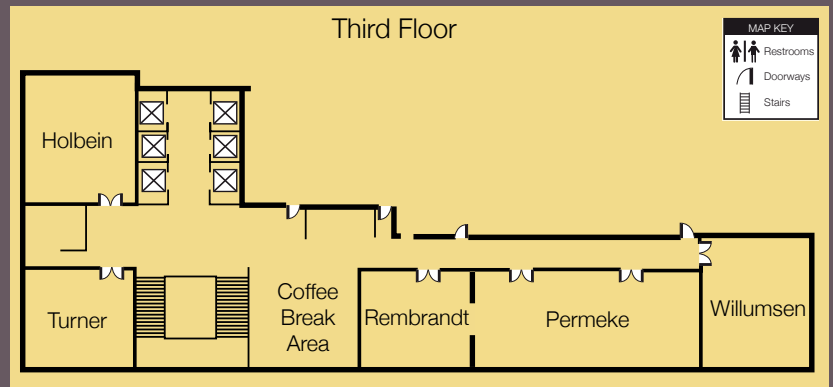
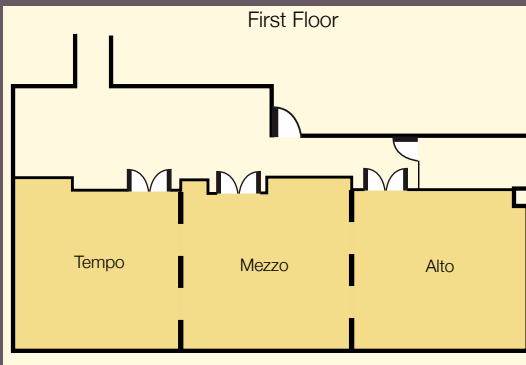
Link@Sheraton Experienced with Microsoft

Stay connected with your family, friends and business partners at our workstations with high speed WiFi internet access.

Horizon Club - Wellness and Fitness Area

On the 30th floor of Sheraton Brussels Hotel: 50sqm of Sheraton Fitness Programmed by Core Performance with state-of-the-art workout equipment, wellness area with sauna and a rooftop swimming pool. Have Brussels' skyline as an impressive view.

Room Name	Square Meters	Dimensions	Height	Banquet	Theater	Reception	Classroom	U-Shape	Boardroom
Horizon I	58	8'x7,5'	2,3'	55	60	60	36	-	-
Horizon II	123	16'x7,5'	2,3'	132	130	180	110	-	-
Horizon III	114	19'x7,5'	2,3'	100	130	150	69	-	-
Horizon I & II	181	24'x7,5'	2,3'	187	190	240	123	-	-
Horizon II & III	237	35'x7,5'	2,3'	232	280	320	168	-	-
Horizon I & II & III	295	43'x7,5'	2,3'	287	340	390	210	-	-
Willumsen	60	8'x7,5'	2,6'	50	70	70	40	26	24
Permeke	104	16'x6,5'	2,6'	100	120	120	70	45	40
Rembrandt	52	8'x6,5'	2,6'	40	55	55	35	26	24
Turner	48	8'x6'	2,6'	40	50	50	35	24	22
Holbein	76	9'x8,5'	2,6'	50	70	70	40	28	24
Salle des nations I & II	509	27,5'x18,5'	3'	480	600	800	300	110	-
Salle des nations I / II	259	18,5'x14'	3'	240	300	400	160	70	-
Foyer	210	12'x10'	2,5'	200	250	350	-	-	-
Tintoretto I & II	100	15'x7'	2,5'	100	120	120	70	45	40
Watteau I & II	100	15'x7'	2,5'	100	120	120	70	45	40
Tintoretto I / II OR Watteau I / II	52	7,5'x7'	2,5'	50	60	50	35	24	22
Memling	52	7,5'x7'	2,5'	50	60	60	35	24	22
Alto	32	7,5'x7'	2,5'	20	60	24	24	12	10
Mezzo	46	6,5'x6'	2,6'	16	40	30	16	16	-
Tempo	46	7,7'x6'	2,6'	40	40	30	16	16	-
Alto & Mezzo	78	7,7'x6'	2,6'	40	70	40	22	16	-
Mezzo & Tempo	92	15,4'x6'	2,6'	70	80	75	42	28	-



ACCESS

Brussels International Airport
 ~20km (12.43 miles)
 20 minutes by cab (32€)

South Station
 2.6km (1.6 miles)
 15 minutes by cab (12€)

Metro Station: Rogier
 Lines 2, or 6 and 3 or 4